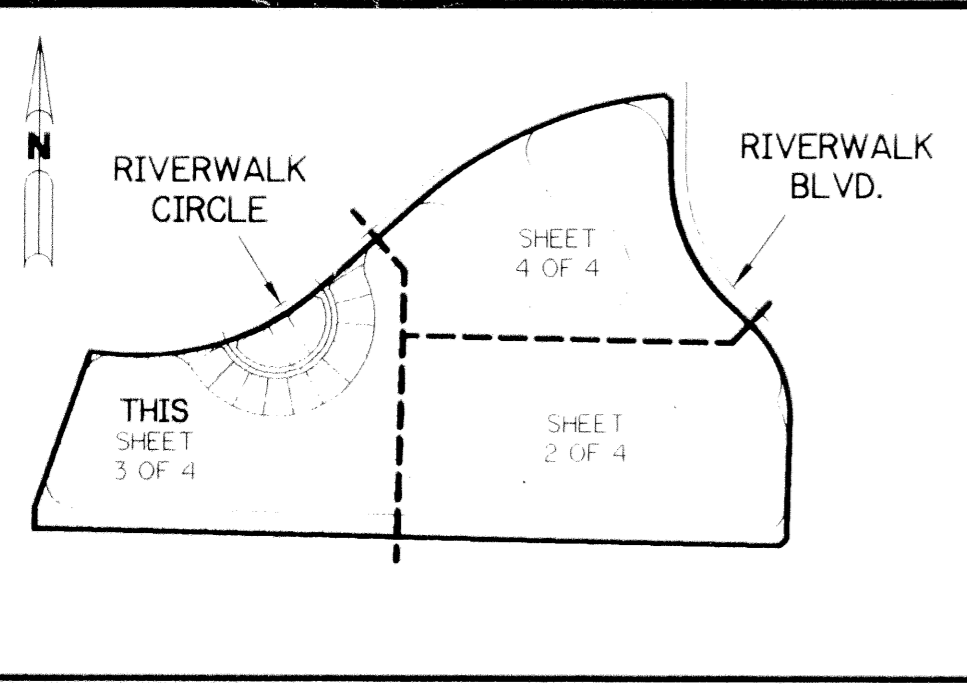


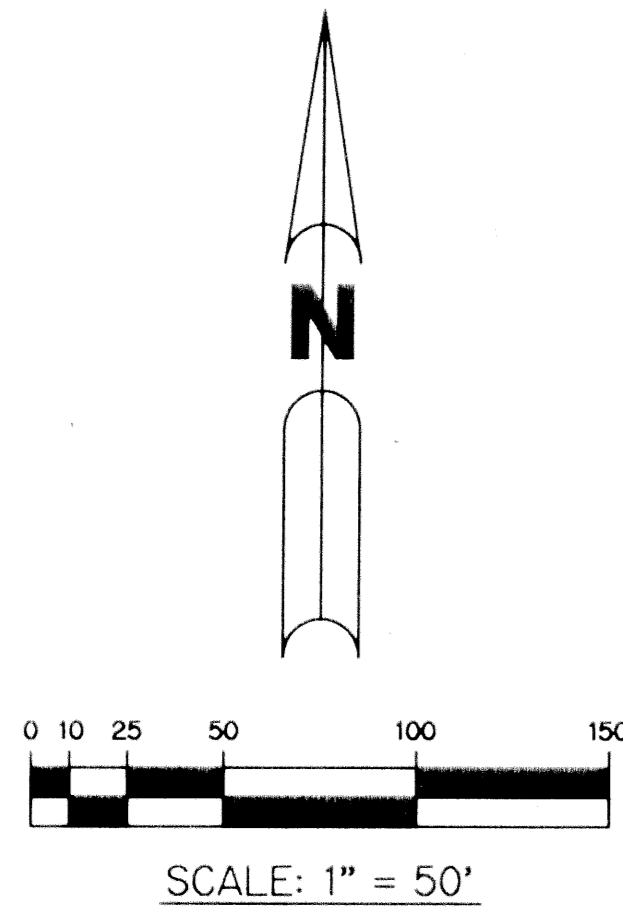
RIVERWALK - PLAT SEVEN

A PARCEL OF LAND LYING IN SECTION 21, TOWNSHIP 43 SOUTH,
RANGE 42 EAST, CITY OF WEST PALM BEACH,
PALM BEACH COUNTY, FLORIDA.

SHEET 3 OF 4 MAY, 1997



KEY MAP
NTS



THIS INSTRUMENT PREPARED BY
PERRY C. WHITE, P.L.S. 4213, STATE OF FLORIDA
LAWSON, NOBLE AND WEBB, INC.
ENGINEERS PLANNERS SURVEYORS
WEST PALM BEACH, FLORIDA

LEGEND:

- SET PERMANENT REFERENCE MONUMENT, PLS #4213
- SET PERMANENT CONTROL POINT, PLS #4213
- FOUND PERMANENT REFERENCE MONUMENT, PLS #4213
- FOUND PERMANENT CONTROL POINT, PLS #4213
- ∠ DE, TA ANGLE
- BE BUFFER EASEMENT
- LE DRAINAGE EASEMENT
- L ARY LENGTH
- M LAKE MAINTENANCE EASEMENT
- NR NOT RADIAL
- NTS NOT TO SCALE
- ORF OFFICIAL RECORD BOOK
- FB FB
- FGS FGS
- PLS PROFESSIONAL LAND SURVEYOR
- PLM PROFESSIONAL SURVEYOR AND MAPPER
- R RADIUS
- RE RIVERWALK EASEMENT
- R/W RIGHT OF WAY
- ST SURVEY TIE
- UE UTILITY EASEMENT
- DWELL DRAINAGE WALL & LANDSCAPE EASEMENT

RIVERWALK
PLAT SIX
P.B. 80, PGS. 45, 52

N01°14'43"E
74.47'

N19°12'10"E
574.89'

TRACT "B"

LIMITS OF PLAT

(200' R/W)
OKEECHOBEE BOULEVARD

N88°45'17"W 1428.91' (TOTAL)

1805.01' (TOTAL)

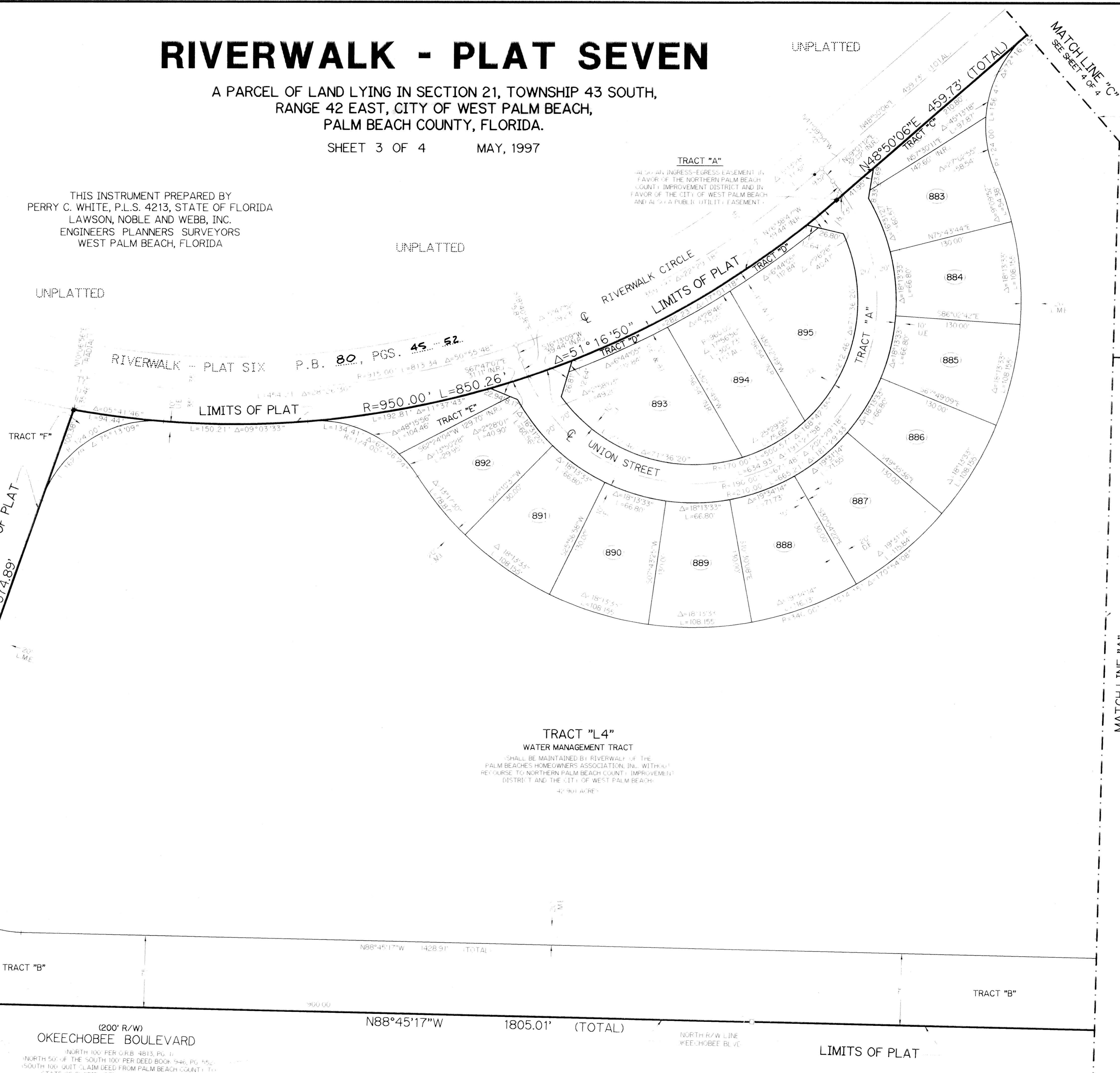
NORTH R/W LINE
OKEECHOBEE BLVD

LIMITS OF PLAT

NORTH 100' PER O.R.B. 4613, PG. 1;
NORTH 50' OF THE SOUTH 100' PER DEED BOOK 946, PG. 45;
SOUTH 100' QUIT CLAIM DEED FROM PALM BEACH COUNTY TO
STATE OF FLORIDA PER DEED BOOK 922, PG. 259.

TRACT "L4" WATER MANAGEMENT TRACT

SHALL BE MAINTAINED BY RIVERWALK OF THE
PALM BEACHES HOMEOWNERS ASSOCIATION, INC. WITHOUT
RESORT TO NORTHERN PALM BEACH COUNTY IMPROVEMENT
DISTRICT AND THE CITY OF WEST PALM BEACH.



MATCH LINE "A"
SEE SHEET 2 OF 4

MATCH LINE "C"
SEE SHEET 4 OF 4

SUBDIVISION * RIVERWALK PLAT SEVEN

BOOK 80 PAGE 55

FLOOD ZONE FLOOD MAP #

QUAD # ZONING

SE ZIP CODE

PUD NAME City of West Palm Beach TRZ 870